



# EVORTLE

a BEYER brand

# SR2512



MOBILE  
JAW  
CRUSHER

evortle.com



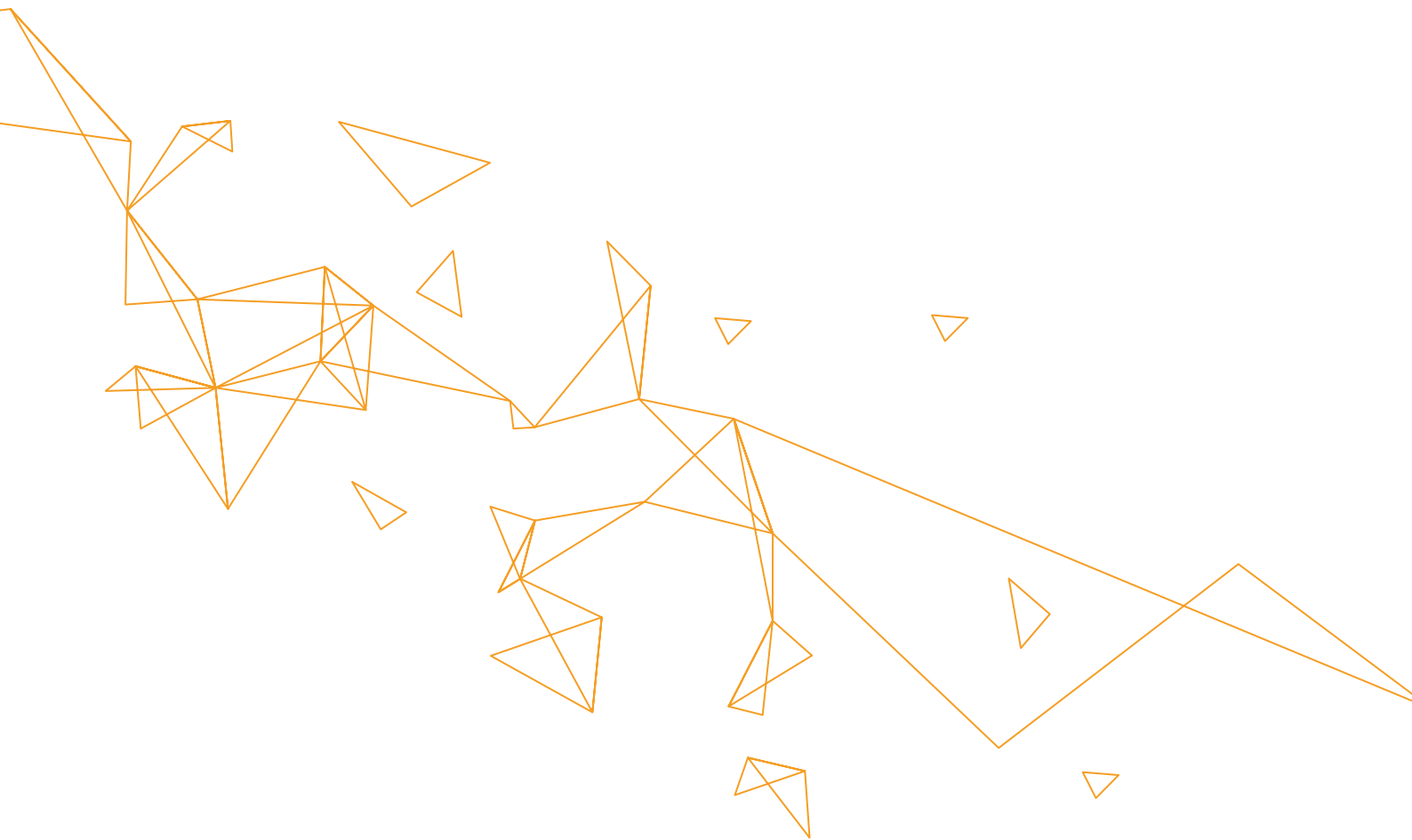
2512




EVORILE

SR-250

MEYER  
brand





To let you  
produce more  
efficiently;

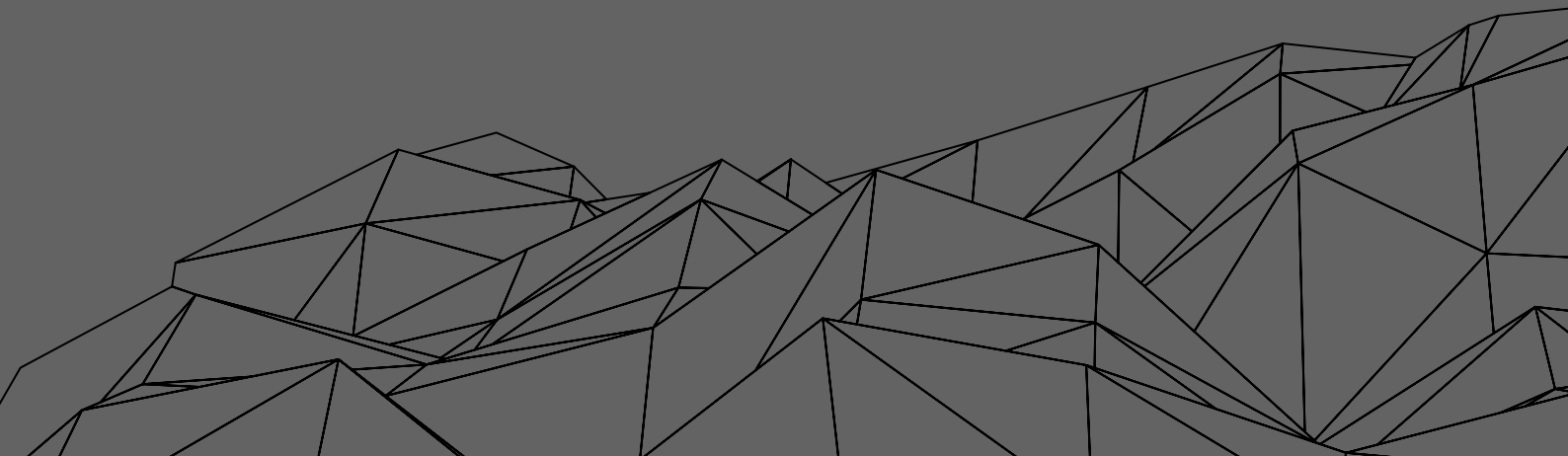
**Evortle!**

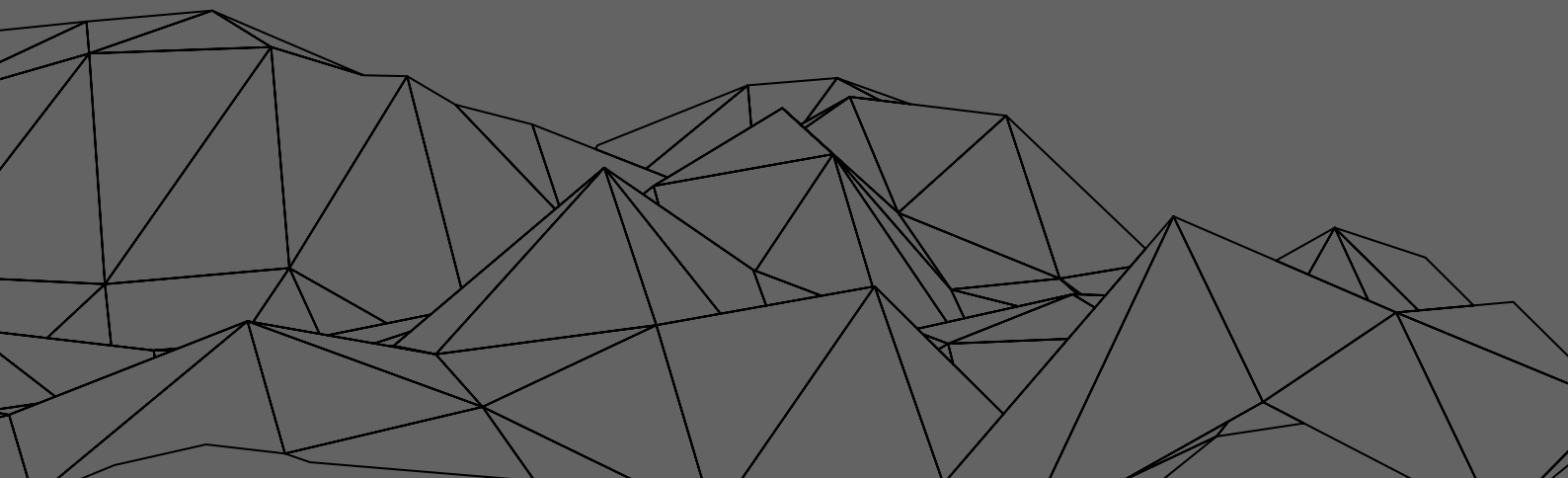
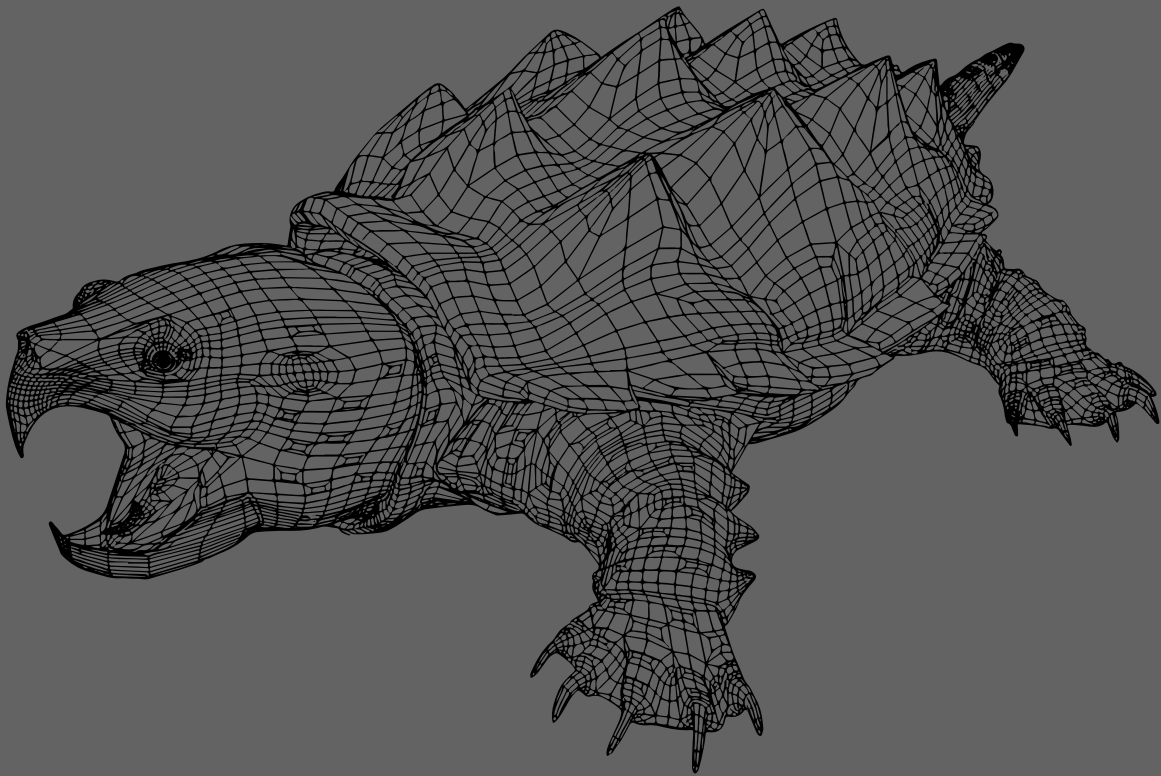
# About

## Us

Evortle is a Beyer Brand. Founded in association with the German partnership in 1988 in Turkey, Beyer created Evortle with its experience based on many years, aesthetics, technology and quality. Beyer's know-how, experience in sector and quality and Evortle's modern design and innovation have combined and presented their products which have been generated from our principles of high quality, technological and environmentally friendly, throughout the world.

With a customer-oriented production policy and a new brand with high after-sales service capability, we have always targeted to produce better products that you trust more. For a greener world, Evortle and Beyer offered mobile crushing, screening and recycling plants into your service. Like its products in different segments, it offers you solution-oriented for different environments and in diverse capacities in the mobile screening plant.





**SR-2512** is a mobile screening plant that can meet the screening needs of different sectors and offer the advantages of being a double-layered screen that works with forced vibration at highest level.

It is a mobile screening machine that can move, can be easily set up, can be used with a single person and shows optimum performance.

Due to its fast set-up time and maneuverability, the **SR-2512** is ideal for your projects in small or large workspaces in different locations.

All equipment which allows it to be trailed

behind a vehicle at a speed of 80 km within the legal limits is standard equipment on the machine.

The chassis on the rubber wheel allows it to be towed and transported as easy as in the comfort of a caravan, without the need for large vehicles, in accordance with our principles of maximum efficiency and minimum environmental damage.

Material input into the bunker can be done easily with an excavator, wheel loader or conveyor belt.

A separate calibration can be achieved by





preventing the entrance of coarse materials that are subjected to pre-separation into the screen with the slope adjustable bunker grid; as well as preventing bulky materials from damaging the plant.

**SR-2512** classifies the materials into three different sizes with double deck screen system and easily changeable screen wire. Ordered as an optional functionality, the magnetic separator allows metal parts to be separated from other materials and waste.

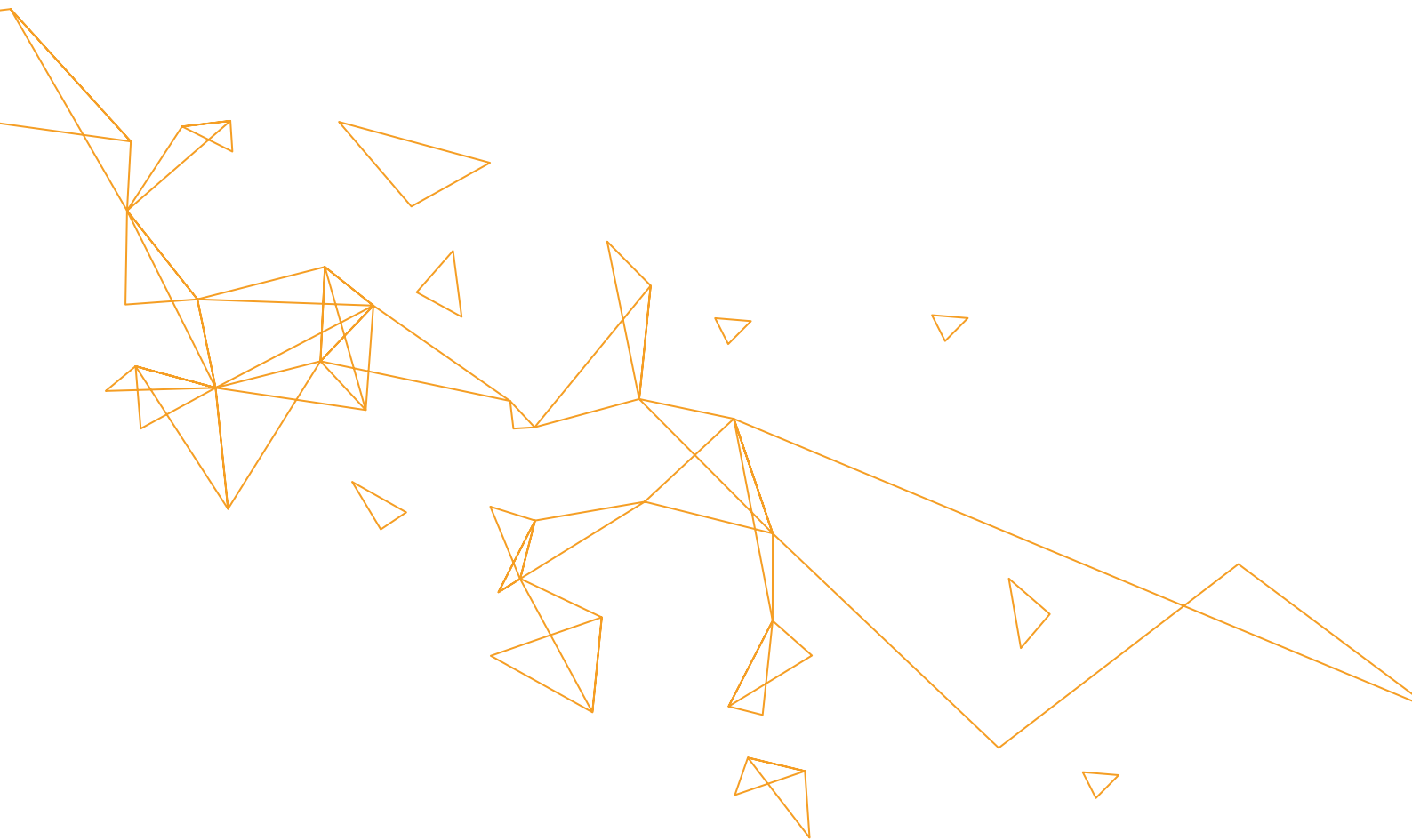
It is a user - friendly machine, as controlled with a remote control by only a person and its speed adjustable features. Hydraulic foldable


conveyor belts, on the other hand, enable the facility to be set up in a short time such as 15 minutes and to be gathered at the end of the work, allowing easy and rapid location change and being ready for any task at different places and times.

As having the users as the focus, and allowing durable and flexible use, the **SR-2512** is also suitable for our high efficiency, low maintenance cost and optimum benefit principles.

With all these features, the **SR-2512** is your unique, easy - to - use, low - cost assistant in your business.







In order you  
do your job  
better, **we are  
doing more  
better!**

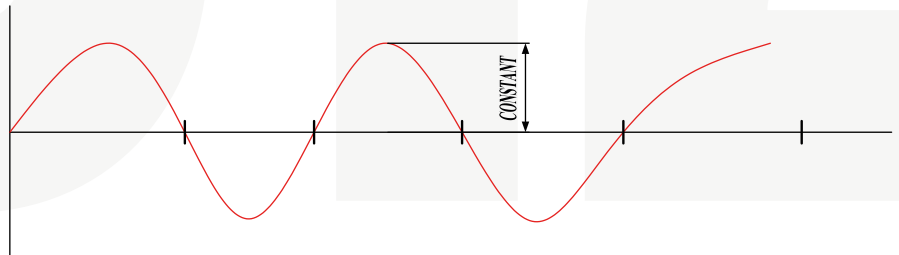
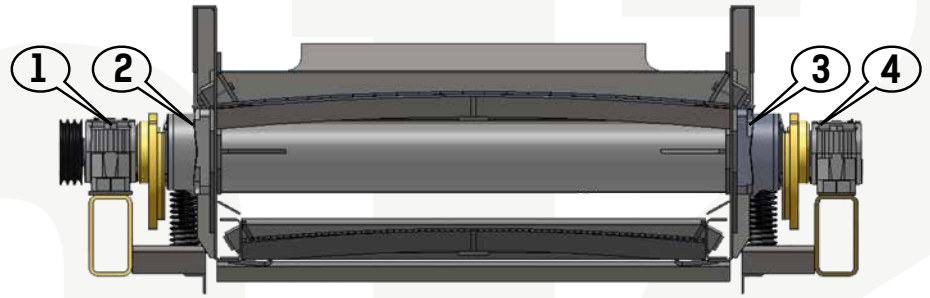
## TECHNICAL PROPERTIES

Capacity Max.	80 m <sup>3</sup> / h
Feeding Hopper	4 m <sup>3</sup> (5,2 yd <sup>3</sup> )
Remote Controlled Hydraulic Tilting Hopper Grid	
Main Belt Conveyor Width	800 mm (31,5")
Speed Adjustable Main Belt Conveyor	
Forced Vibratory Special Screening Machine: Eccentric Pivot, 4-Housing	
Screen Dimension	2,5 x 1,25 m (8,3"x4,1")
Hydraulic Collapsible Belt Conveyor	3 Pcs
Conveyor Belt Drive	Drum Motor
Control Panel	
Movement Mechanism Rubber Wheel	
Tandem Axle Chassis with Air Brakes, Towing Eye and Taillights	
It can be towed up to speed of 80 km/h on highway (50 mph).	
Transportation Length	8,950 mm (29',5")
Transportation Width	2,800 mm (9',3")
Transportation Height	4,100 mm (13',6")
Transportation Weight	8,500 kg

## OPTIONAL PROPERTIES

Diesel Driven Generator Set	46 kVA
Piano Mesh Wire and Stretcher	
Start / Stop with Remote Control	
Magnetic Separator	

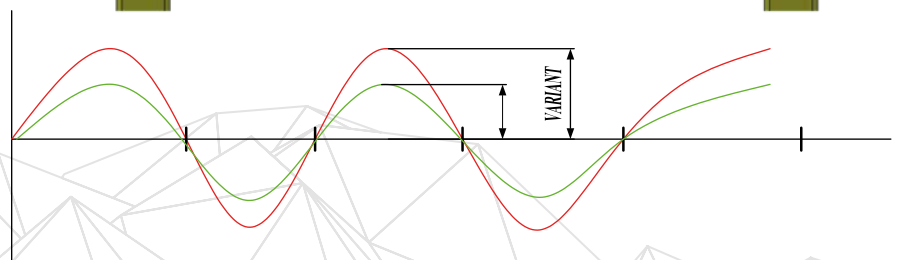
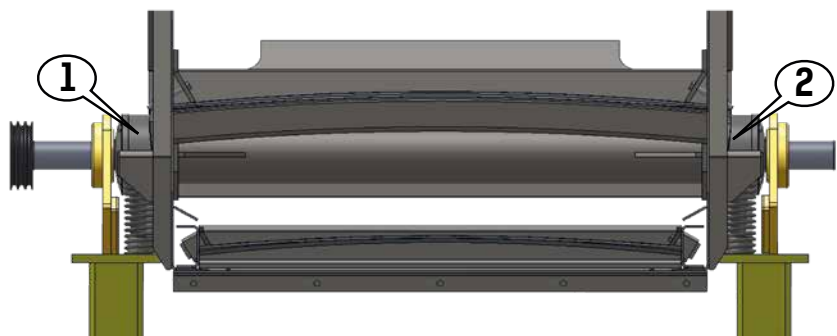
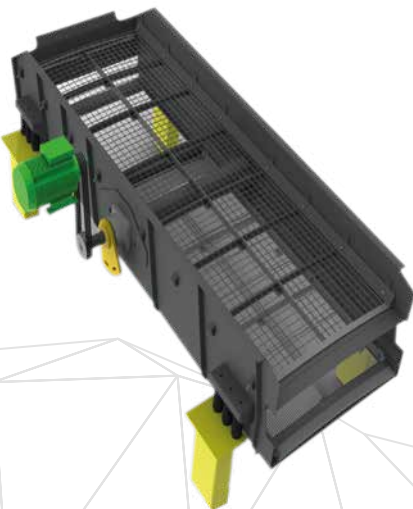
# Why Forced Vibrating Screen?



- » Eccentric Pivot
- » 4 Housing system
- » The balance of the sieve with the weight attached to the pivot is taken.
- » Even if there is a lot of material on it, there is no need for weight reinforcement.
- » The sine curve does not change according to the amount of material. Therefore, even if there is a lot of material, fainting and clogging will not occur.

»12  
13«

# Other Screen Systems



- » Tilting adjustment is not possible
- » 2 Housings



## Why **Drum** Motor?

- » Fully Enclosed Compact Structure
- » Space - Saving Design
- » High Safety
- » Low Maintenance Cost
- » Efficiency
- » Energy Saving
- » Thermal Protection
- » Low Noise Level

## What Can Be **Sieved**?

**SR-2512** is for ballast, coal, aggregate, turf, soil, sand, construction waste, recycling, salt, agricultural products and any material you want to sieve.

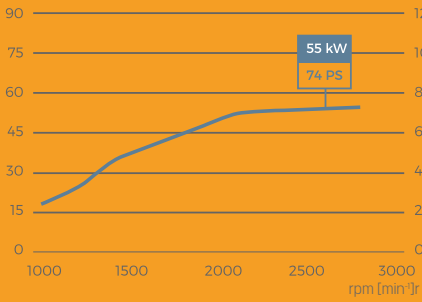
»14  
15«

## Why **Piano** **Mesh** Wire?

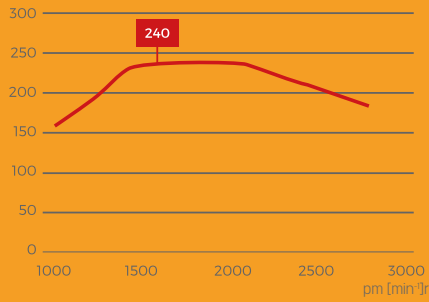
- » No clogging with moist material.
- » Short operation time.
- » High rate of flat material passing through.

# Diesel Engine: HATZ 4H50TICD - 4H50TIC

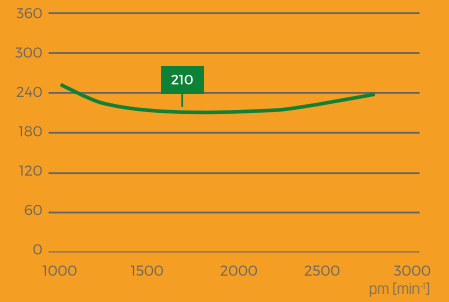
Power [kW / PS]



Torque [kNm]



Fuel Consumption [g / kW]







## ervice upport pare parts

You were a valuable customer until you bought the product; after purchasing, you are now a member of the Beyer / Evortle family.

Combining the experience of the past and today's technology, Beyer engineering takes care to choose the best brands in the world while choosing its suppliers and solution partners in the production process.

Evortle and Beyer Machinery produce machines that can last for many years with little maintenance.

Technical problems that may occur in the machines have been tried to be minimized. We are at your side as Beyer Machinery and our dealers for all kinds of problems and malfunctions.

We know the value of your time. An emergency response to a malfunction occurred in the machine saves both time and money.

We may send qualified Beyer service technicians from our Headquarters to all over the world.

But the main issue is to react any problems locally.

Evortle and Beyer Machinery use products that are eligible in the whole world and that you can easily access around you.

Our diesel engines are Cat, Hatz, Volvo, Perkins and Deutz brands.

Our bearings are SKF. Our hydraulic systems are from Dunfoss and Sun, our cooler is from AKG, our hydraulic filter is from Argo Hytos, and our accessories are from Stauff.

We choose ABB, Siemens and Schneider brands for switch materials in electrical panels.

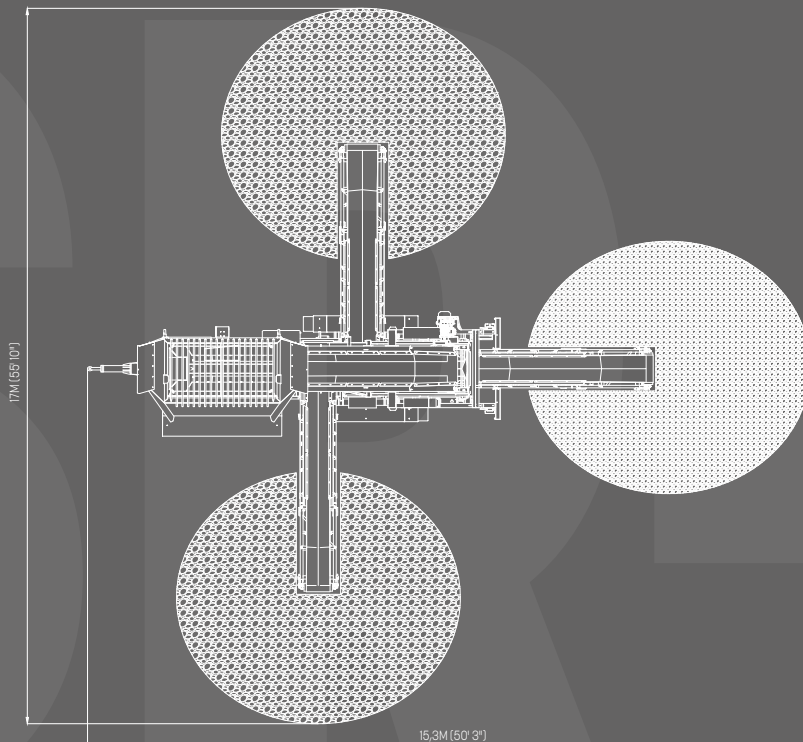
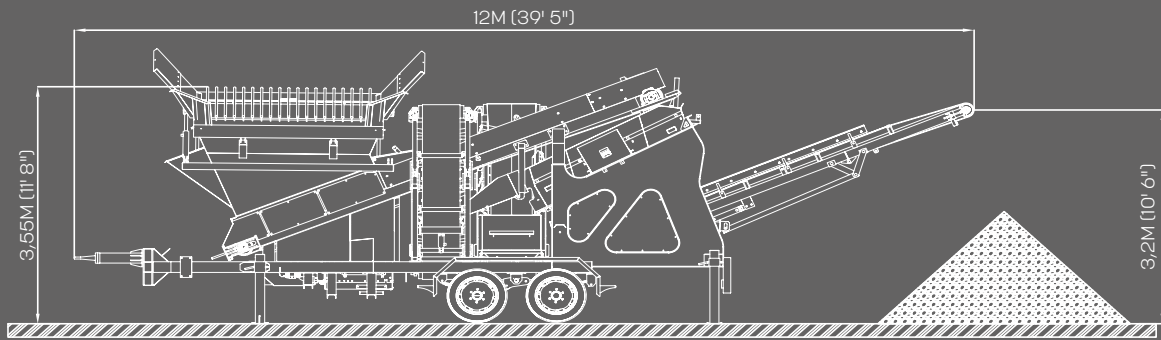
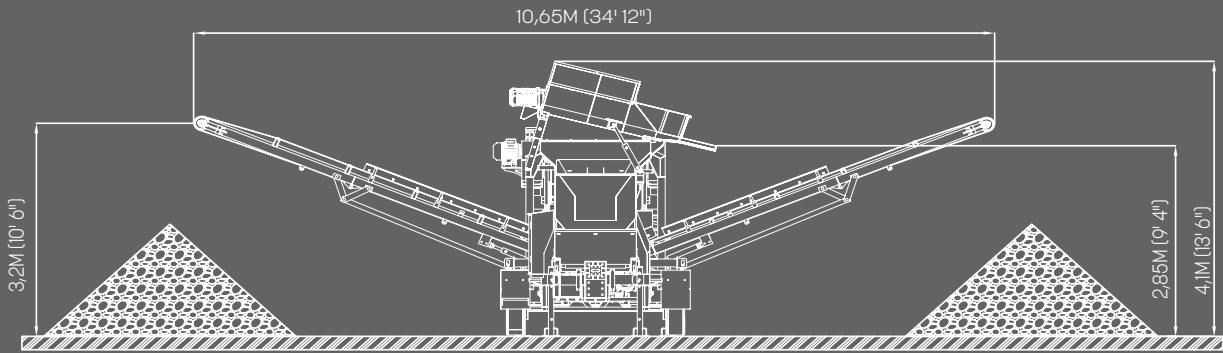
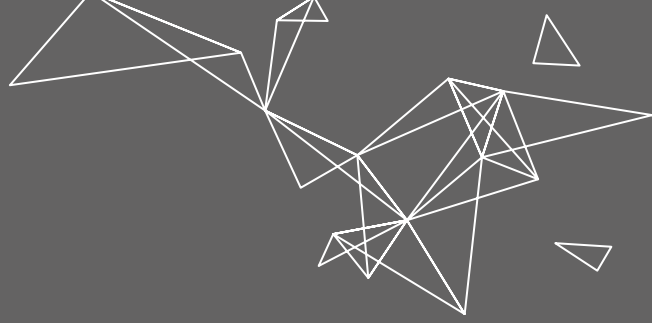
Our remote control systems are manufactured by HBC.

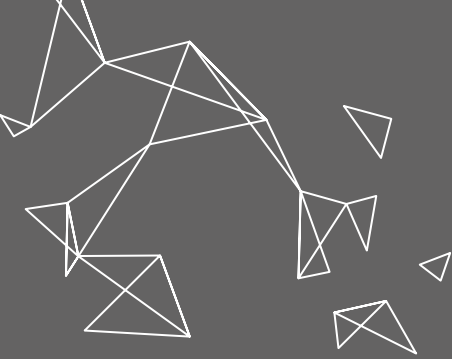
We use Strickland brand tracks as movement system.

Engine fluids and filters are the kind you can find at your local suppliers.

Beyer saves you time and money by using easily available products with a widespread service network in its machines.

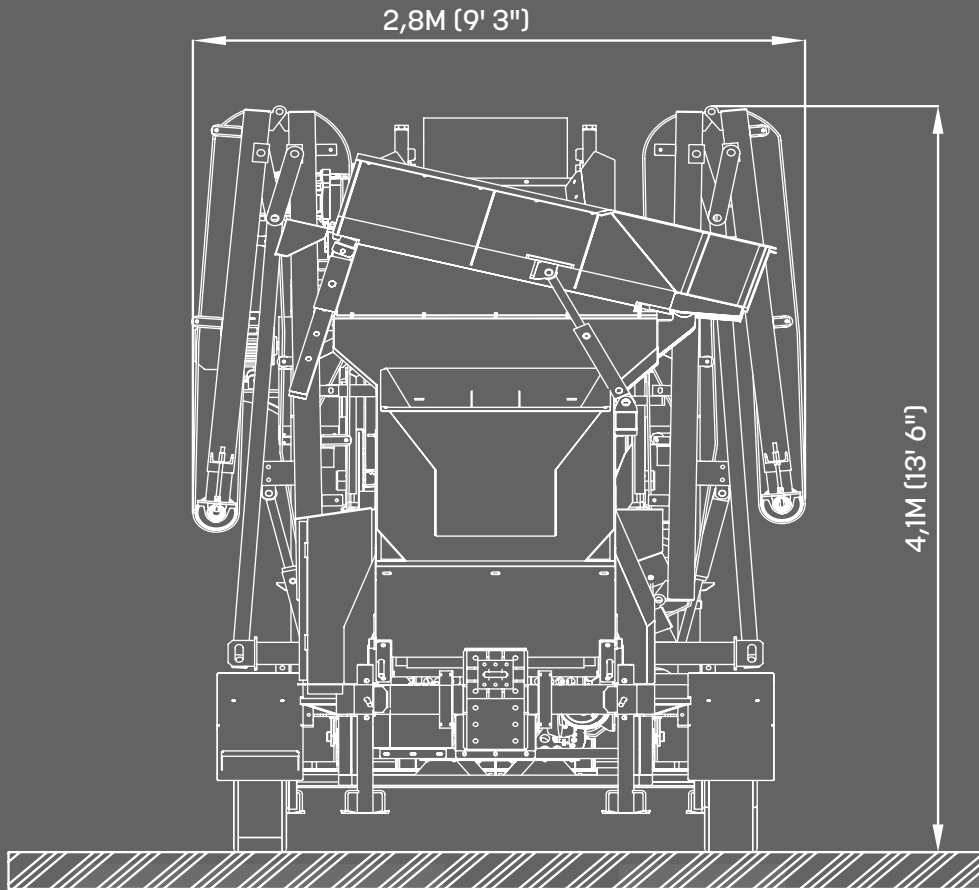
# Operational Dimensions



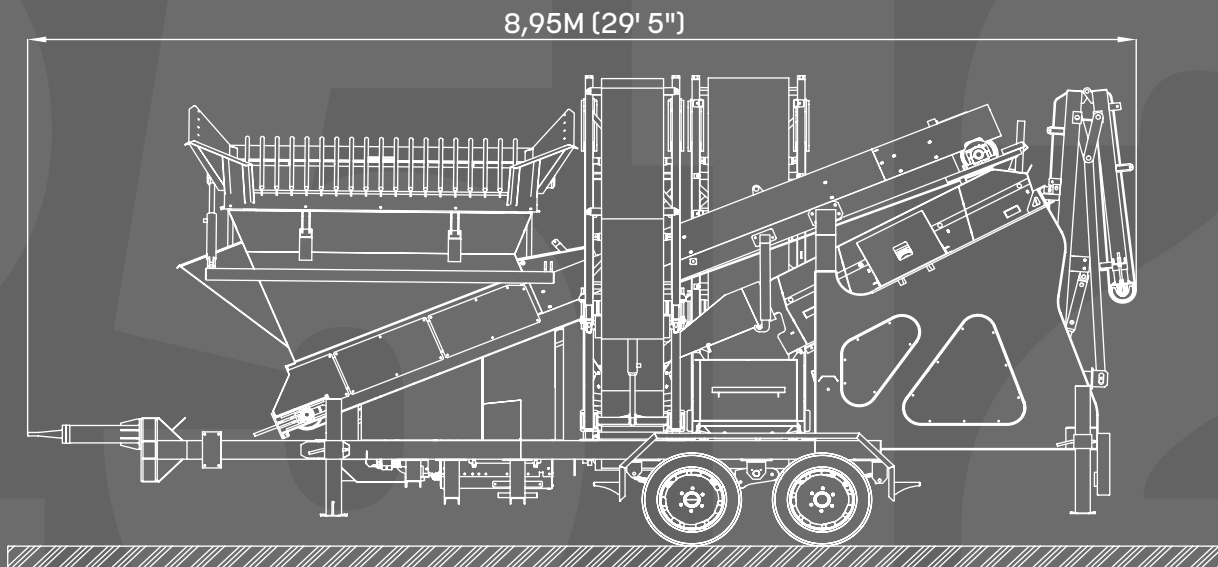


# Transportational Dimensions

SR-2512



» 20  
19 «





Producer:

**BEYER MAKİNA SAN. VE TİC. LTD.**

General Distributor:

**EVORTLE MAKİNA İÇ VE DIŞ TİC. LTD.**

Saray Mah., Nazım Ercan Bulvarı, No: 36 06980  
Kazan, ANKARA / TURKEY

+90 312 815 14 59-60

beyer@beyer.com.tr | [www.beyer.com.tr](http://www.beyer.com.tr)

info@evortle.com | [www.evortle.com](http://www.evortle.com)