



# EVORTLE

a BEYER brand

# WS 1200



MOBILE  
JAW  
CRUSHER

evortle.com

# WS

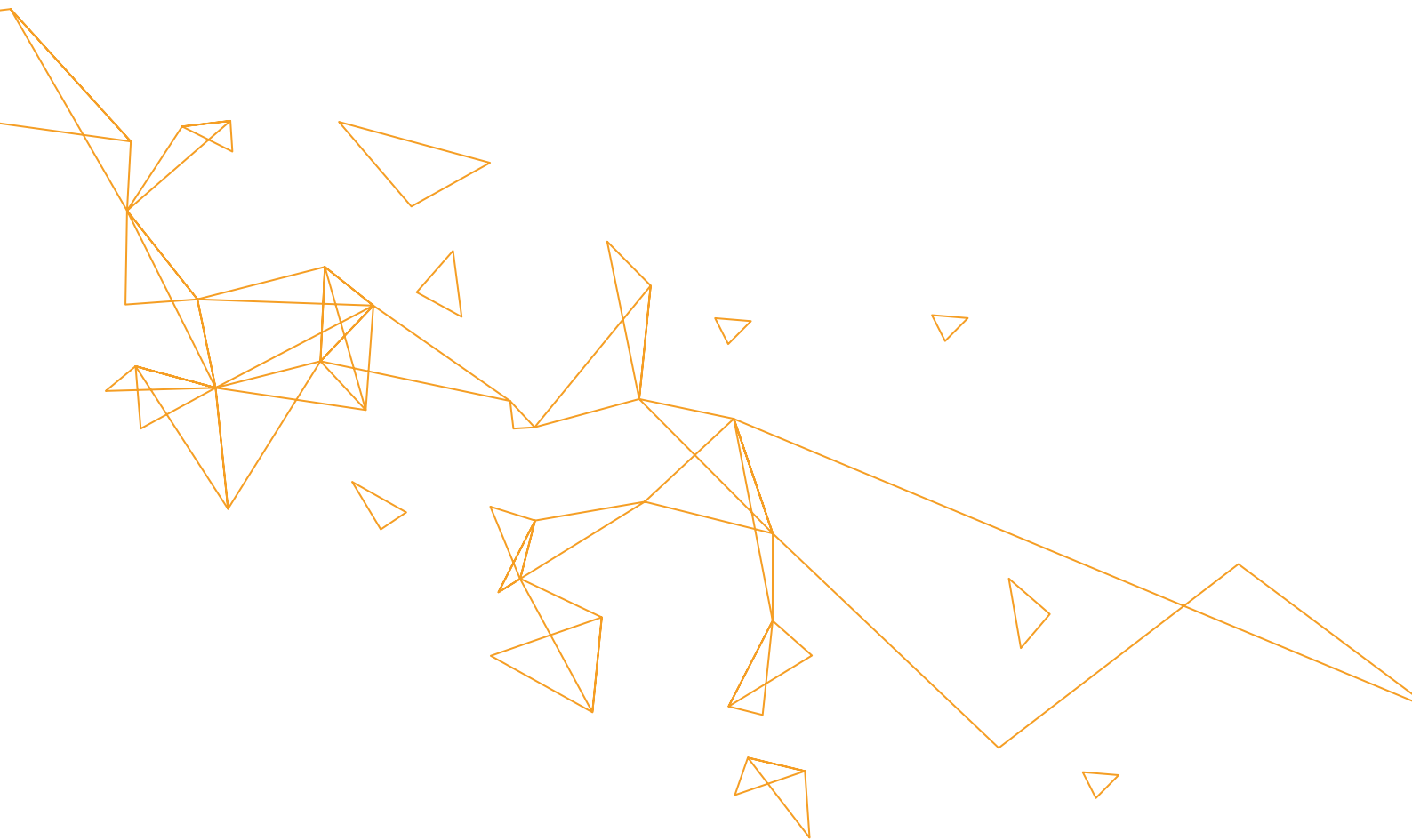





# 12000

partle.com







To let you  
produce more  
efficiently;

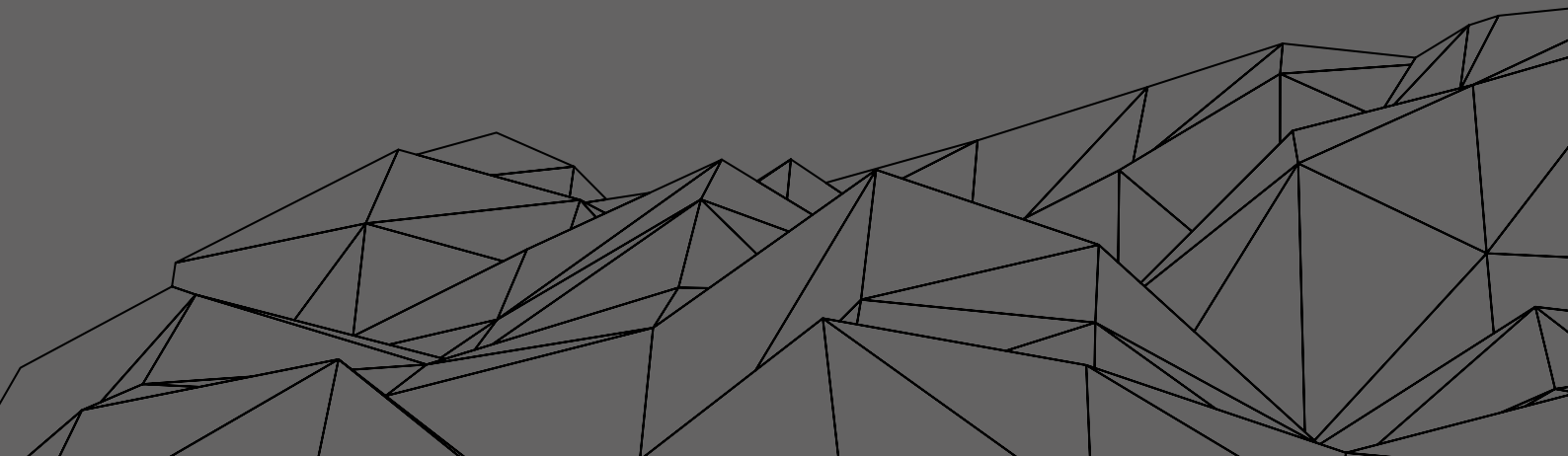
**Evortle!**

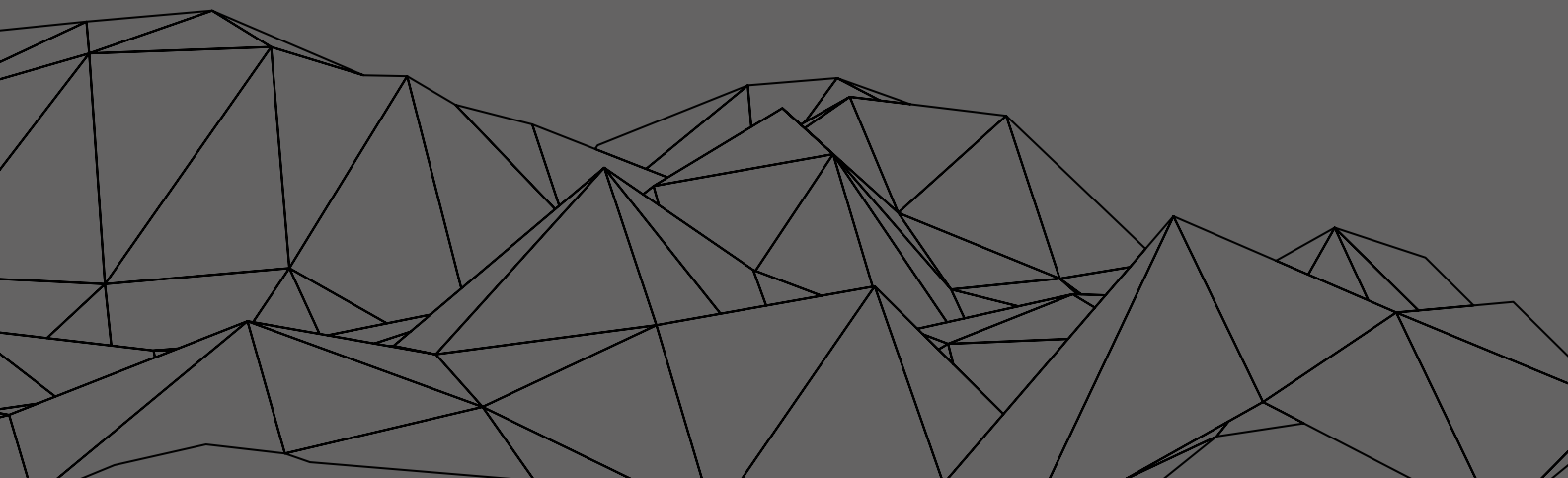
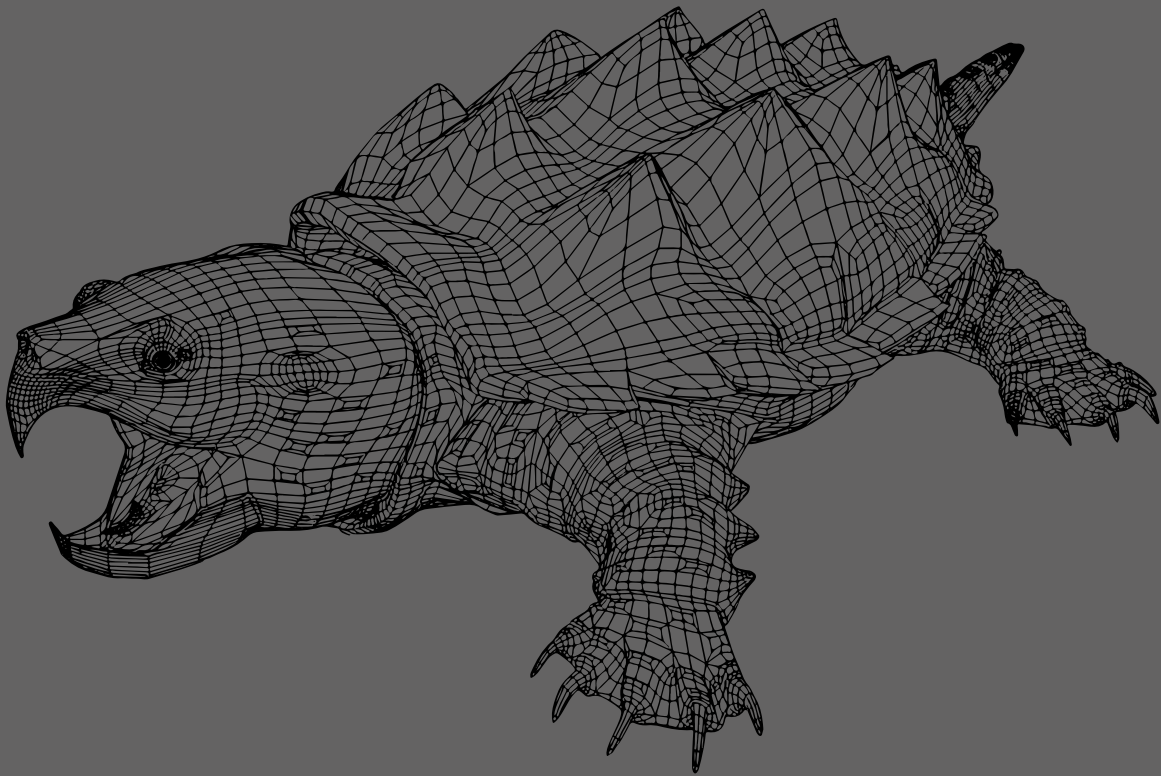
# About

## Us

Evortle is a Beyer Brand. Founded in association with the German partnership in 1988 in Turkey, Beyer created Evortle with its experience based on many years, aesthetics, technology and quality. Beyer's know-how, experience in sector and quality and Evortle's modern design and innovation have combined and presented their products which have been generated from our principles of high quality, technological and environmentally friendly, throughout the world.

With a customer-oriented production policy and a new brand with high after-sales service capability, we have always targeted to produce better products that you trust more. For a greener world, Evortle and Beyer offered mobile crushing, screening and recycling plants into your service. Like its products in different segments, it offers you solution-oriented for different environments and in diverse capacities in the mobile screening plant.





Evortle Water Separator can help you in recycling operations and waste management. It turns contaminated rubble or gravel, which are mixed with plastic, wood or Styrofoam, into recyclable goods. After your demolition projects, heavy materials are separated from light-weight ones in order to ease processing both outputs to re-value.

Evortle Water Separator has two conveyor belts, one of them has ten lines of brushes to sweep the light materials floating over the water, filled in the tank, and discharge it from one side of the plant. There are approximately 5 cubic meters of water in full tank, which level automatically controlled with a float valve.

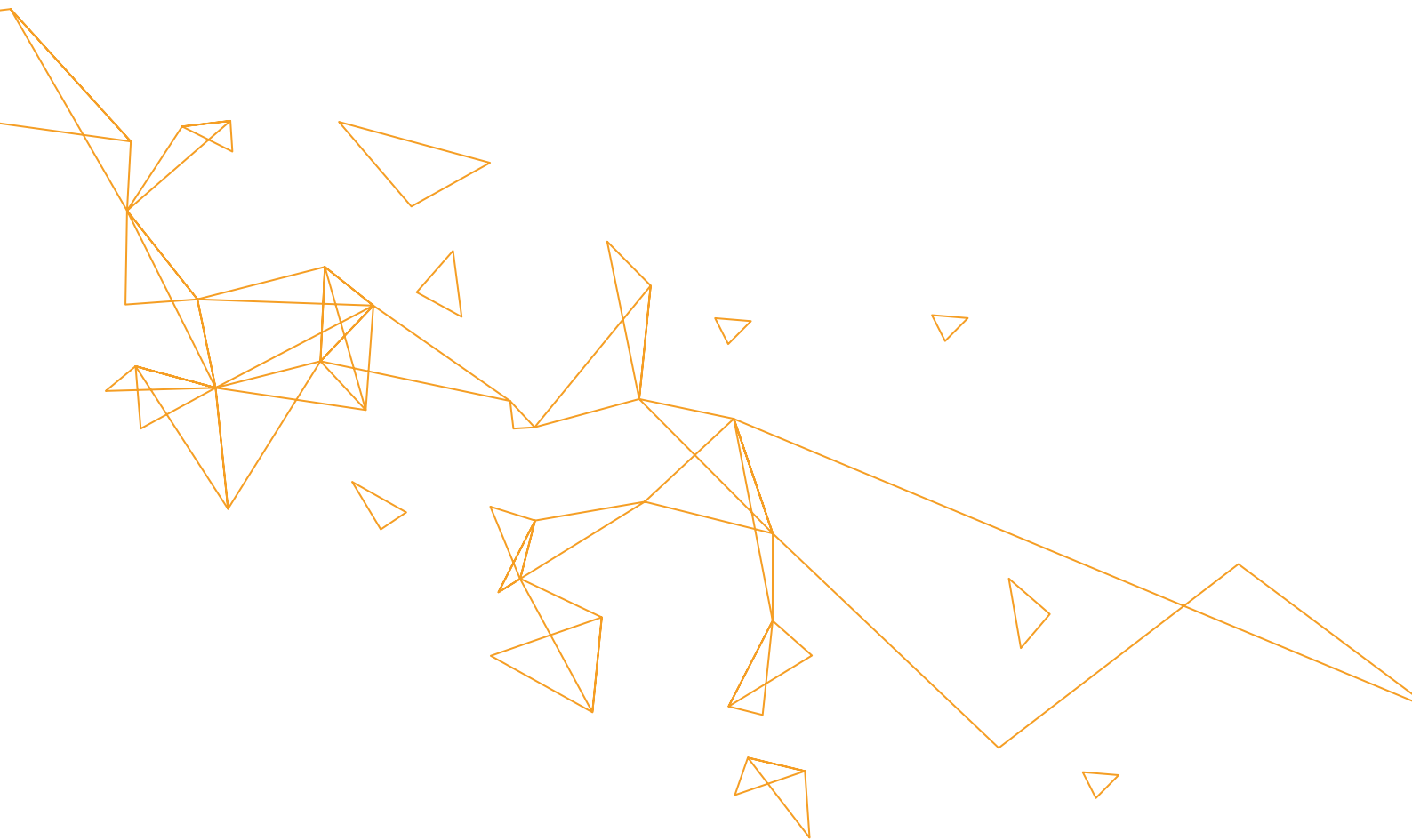





Heavy-material conveyor belt removes heavy material that sinks to the bottom and throws out a stockpile. Brush drum cleaners at head drum of conveyors, both light-weight conveyor and heavy material conveyors, remove dust and garbage on the belts. Evortle Water Separator needs a minimal

space to work. It uses grid power and runs at an optimal level to decrease operating costs and maintenance requirements are quite low; it just necessitates cleaning the tank by opening the cover at the basin and greasing the bearing houses. It would be an essential part of your recycling facility.







In order you  
do your job  
better, **we are  
doing more  
better!**

## TECHNICAL SPECIFICATIONS

Tank Water Capacity	5 m <sup>3</sup>
Strengthened Steel Pool	
Operating Capacity	Max. 50 m <sup>3</sup> /h
2 Units of Belt Conveyor Attached To The Plant;	
<i>Belt Conveyor for Light Material: (Belt with Brushes)</i>	
1600x3500 mm, 1.1 kW Gear Reducer (with Cleaning Brushes)	
<i>Belt Conveyor for Heavy Material:</i>	
1200x4500 mm, 2.2 kW Gear Reducer (with Cleaning Brushes)	
Frequency Inverter (Speed adjustable for belt conveyors)	
Control Panel (Includes all components to operate the machine)	
Transportation Length	6400 / 20' 12"
Transportation Width	2100 / 6' 11"
Transportation Height	2665 / 8' 9"
Transportation Weight	4050 kg

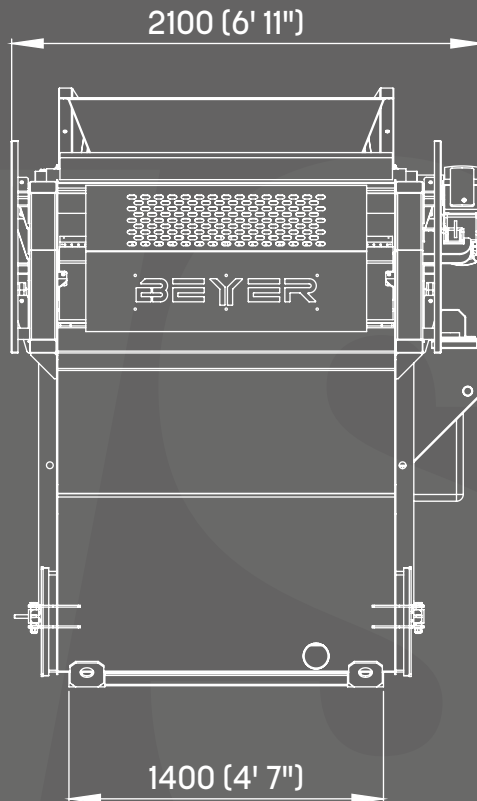
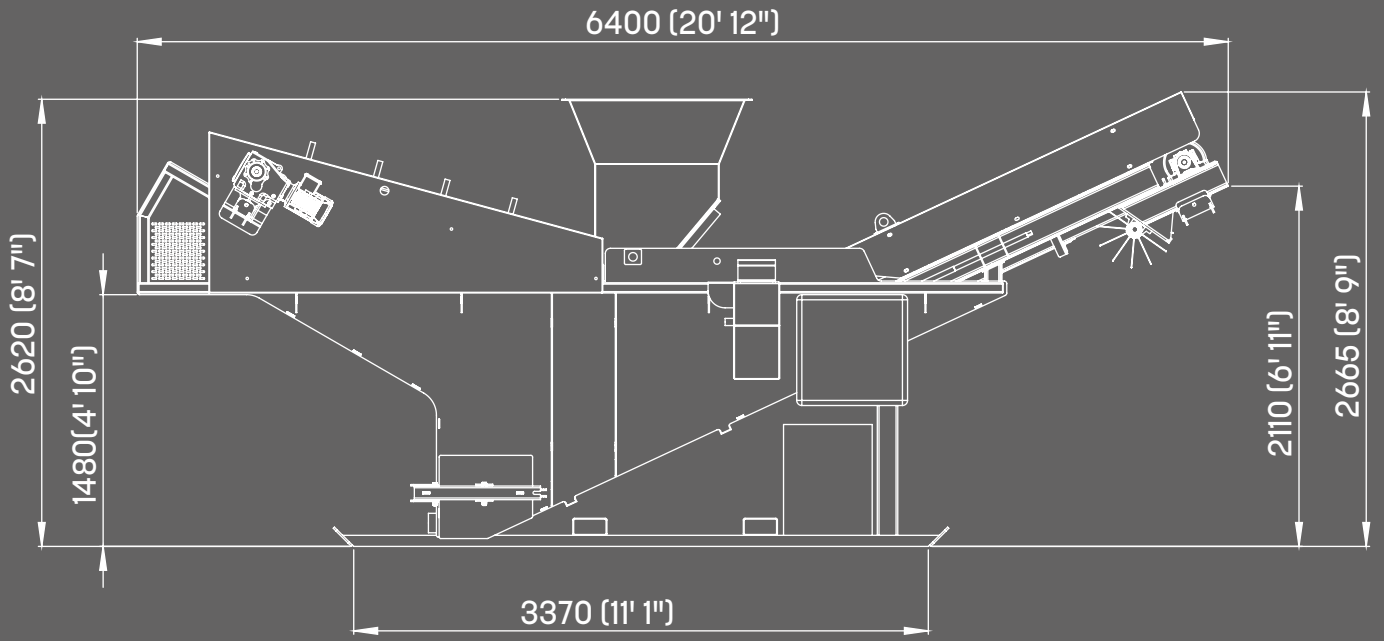






» 12  
13 «

# Transportation Dimensions





## ervice upport pare parts

You were a valuable customer until you bought the product; after purchasing, you are now a member of the Beyer / Evortle family.

Combining the experience of the past and today's technology, Beyer engineering takes care to choose the best brands in the world while choosing its suppliers and solution partners in the production process.

Evortle and Beyer Machinery produce machines that can last for many years with little maintenance.

Technical problems that may occur in the machines have been tried to be minimized. We are at your side as Beyer Machinery and our dealers for all kinds of problems and malfunctions.

We know the value of your time. An emergency response to a malfunction occurred in the machine saves both time and money.

We may send qualified Beyer service technicians from our Headquarters to all over the world.

But the main issue is to react any problems locally.

Evortle and Beyer Machinery use products that are eligible in the whole world and that you can easily access around you.

Our diesel engines are Cat, Hatz, Volvo, Perkins and Deutz brands.

Our bearings are SKF. Our hydraulic systems are from Dunfoss and Sun, our cooler is from AKG, our hydraulic filter is from Argo Hytos, and our accessories are from Stauff.

We choose ABB, Siemens and Schneider brands for switch materials in electrical panels.

Our remote control systems are manufactured by HBC.

We use Strickland brand tracks as movement system.

Engine fluids and filters are the kind you can find at your local suppliers.

Beyer saves you time and money by using easily available products with a widespread service network in its machines.



Producer:  
**BEYER MAKİNA SAN. VE TİC. LTD.**

General Distributor:  
**EVORTLE MAKİNA İÇ VE DIŞ TİC. LTD.**

Saray Mah., Nazım Ercan Bulvarı, No: 36 06980  
Kazan, ANKARA / TURKEY

+90 312 815 14 59-60

beyer@beyer.com.tr | [www.beyer.com.tr](http://www.beyer.com.tr)  
info@evortle.com | [www.evortle.com](http://www.evortle.com)