



# EVORTLE

a BEYER brand

# CT 850



MOBILE  
JAW  
CRUSHER

[evortle.com](http://evortle.com)



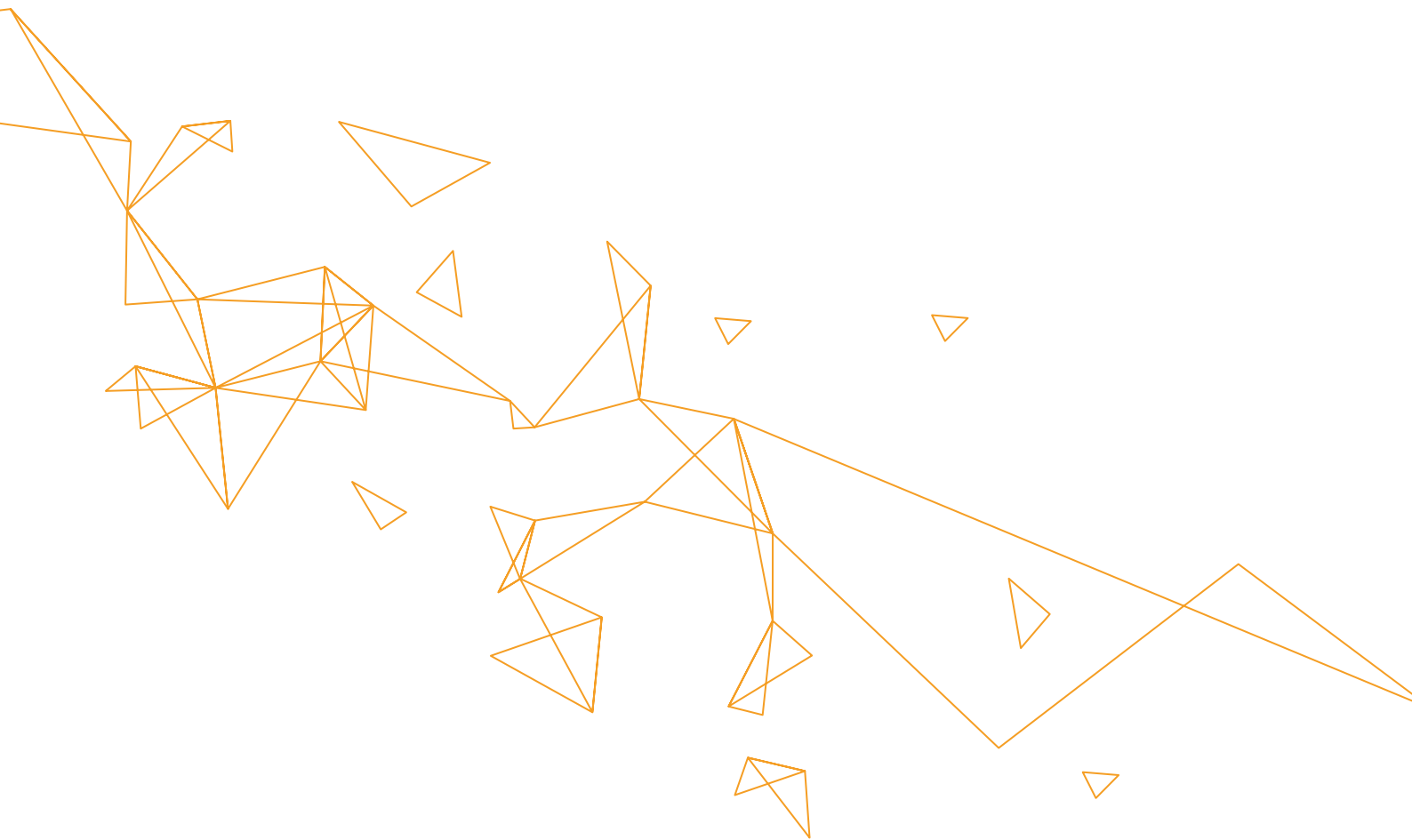
# CTF

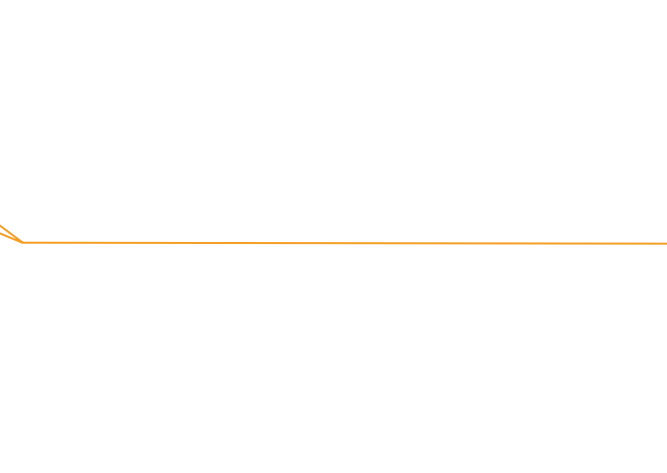




# 950







To let you  
produce more  
efficiently;

**Evortle!**

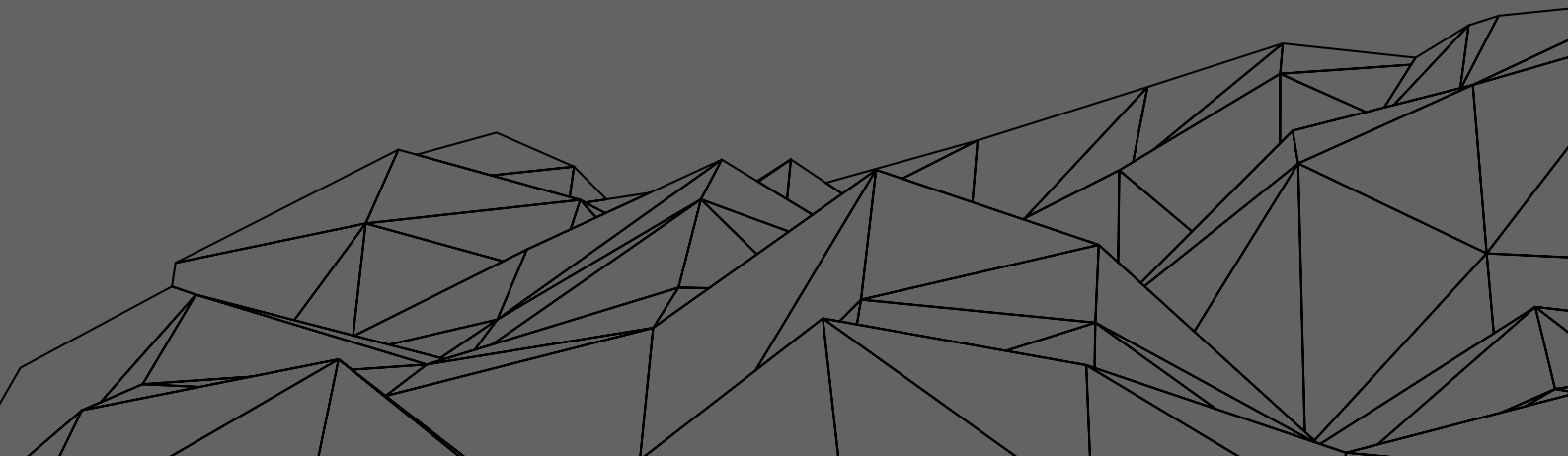


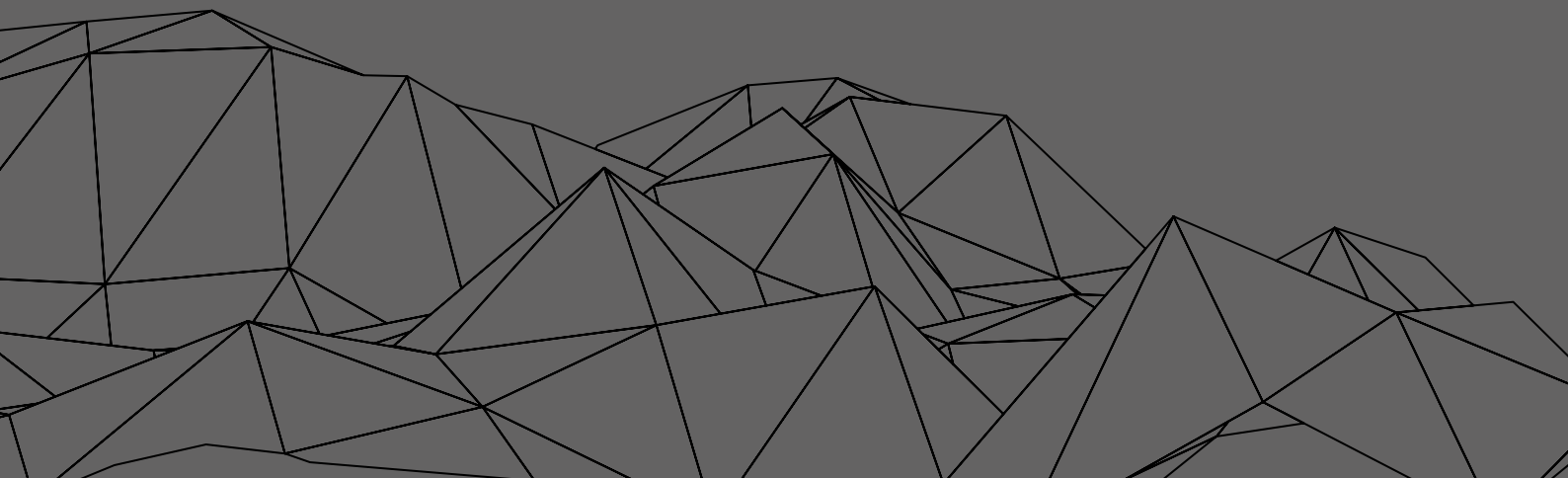
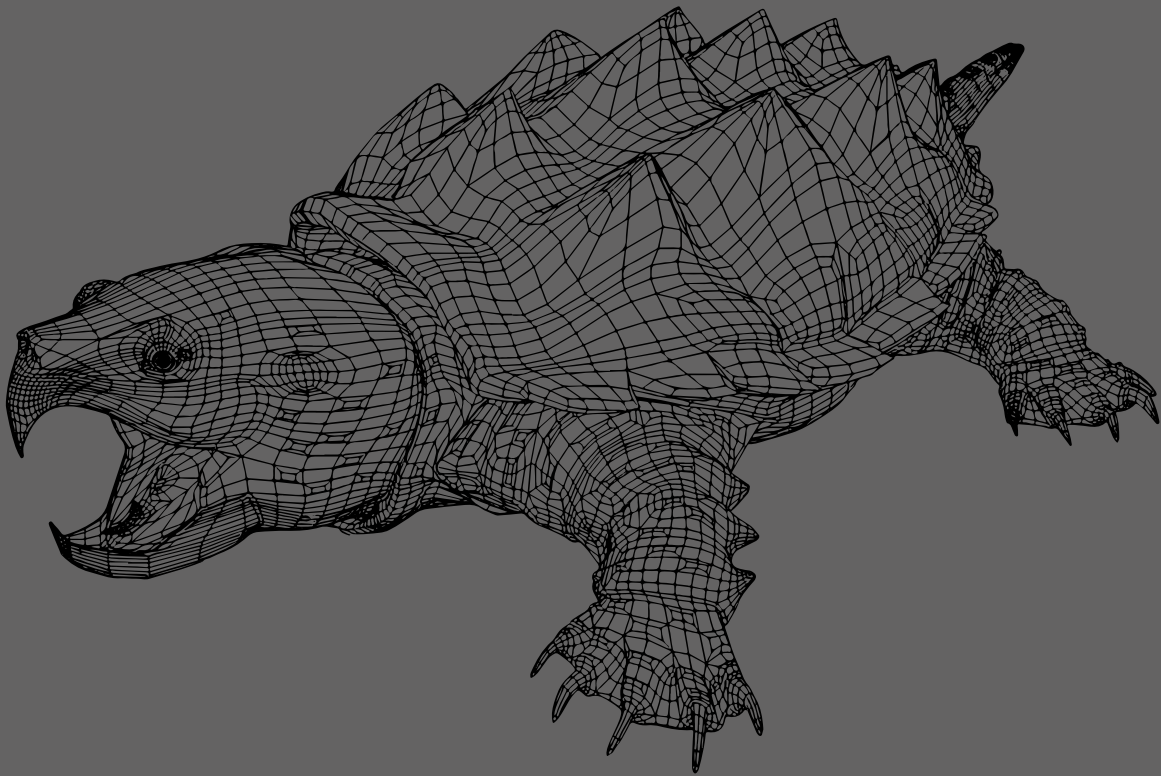
# About

## Us

Evortle is a Beyer Brand. Founded in association with the German partnership in 1988 in Turkey, Beyer created Evortle with its experience based on many years, aesthetics, technology and quality. Beyer's know-how, experience in sector and quality and Evortle's modern design and innovation have combined and presented their products which have been generated from our principles of high quality, technological and environmentally friendly, throughout the world.

With a customer-oriented production policy and a new brand with high after-sales service capability, we have always targeted to produce better products that you trust more. For a greener world, Evortle and Beyer offered mobile crushing, screening and recycling plants into your service. Like its products in different segments, it offers you solution-oriented for different environments and in diverse capacities in the mobile screening plant.





It is for you, when you need a compact crusher with a heavy - duty, which can have excellent performance when used in a various range of applications; from recycling to quarrying. It is powerful to work in coal, limestone, gypsum, silica, flint, dolomite, and gravel, as well as tile, concrete, and clinker.

Having a by - pass belt for the pre - crushing screen, its durability and sustainability are longer which decreases its maintenance costs. It is small enough to fit inside a container; an impressive specification that

lets **CT 850** one step in front among its counterparts.

**CT 850** comes complete with a diesel engine and track system. The selfcontained machine can be powered from that highperforming hydraulic drive.

Jaw crusher can be adjusted hydraulically, so, changing the product size takes less than one minute.

Its quick set - up times, ease of transport, and ease of use are its advantages to be distinguished among mobile crushers.

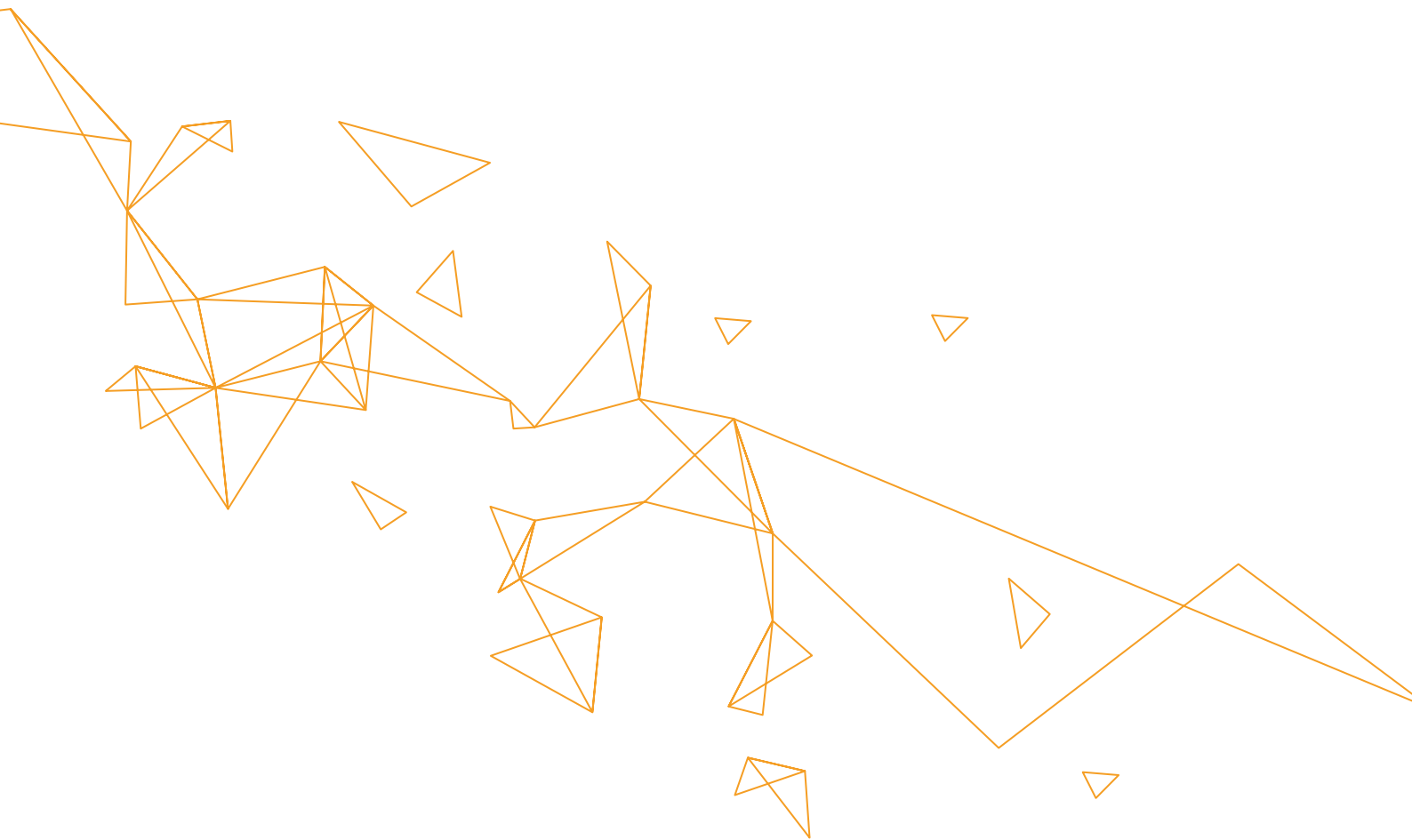







CT850

» 8  
9 «





In order you  
do your job  
better, **we are  
doing more  
better!**



## TECHNICAL PROPERTIES

### VIBRO - HOPPER UNIT

Hopper Volume (with extension) (m <sup>3</sup> )	3 m <sup>3</sup> (3,92 yrd <sup>3</sup> )
Width x Length (with extension) (mm)	2400 x 3000 (7' 10.5' x 9' 10.1")
Hopper Height (mm)	3100 (10' 2")

### CRUSHER

Crusher Inlet Width x Depth (mm)	800x500 (2' 7.5" x 1' 5.7")
Crusher Drive Type	Hydraulic
Adjustment Range of Gap Width (mm)	25-100 (1" x 3.9")
Crusher Gap Adjustment (CGP)	Fully Hydraulic
Crusher Casting Material	Manganese - Steel

### CRUSHING CAPACITY\*

Crushing capacity with CGP = up to 50 mm approx. (t/h)	65 tone
Crushing capacity with CGP = up to 110 mm approx. (t/h)	95 tone

\*The capacity given above may change according to the strength and size of the material.



**CRUSHER DISCHARGE CONVEYOR**

Width x Length (extended) (mm)	1000x9600 (3' 3.3" x 31' 5.95")
Discharge Height Approx. (extended) (mm)	2650 (8' 8.33")
Conveyor Belt Type	Herringbone

**BY-PASS CONVEYOR**

Width x Length (extended) (mm)	500x2750 (1' 7.68" x 9' 0.27")
Discharge Height Approx. (extended) (mm)	1650 (5' 4.96")
Conveyor Belt Type	Herringbone

**POWER SUPPLY UNIT**

Drive Concept	Diesel - Hydraulic Pump
Euro Diesel Engine	Cat or Perkins Stage V
US Diesel Engine	Cat or Perkins Tier 4 Final
Power	110 kW
Output	150 HP
Torque Max.	825 Nm
Consumption of Fuel in an Hour	Approx. 18-22 liter (4,75 - 5,8 gal)
Generator (kVA)	Generator is not available in CT850
Fuel Tank Capacity	300 lt (79,25 gal)
Oil Tank Capacity	470 lt (124,16 gal)

**TRANSPORT**

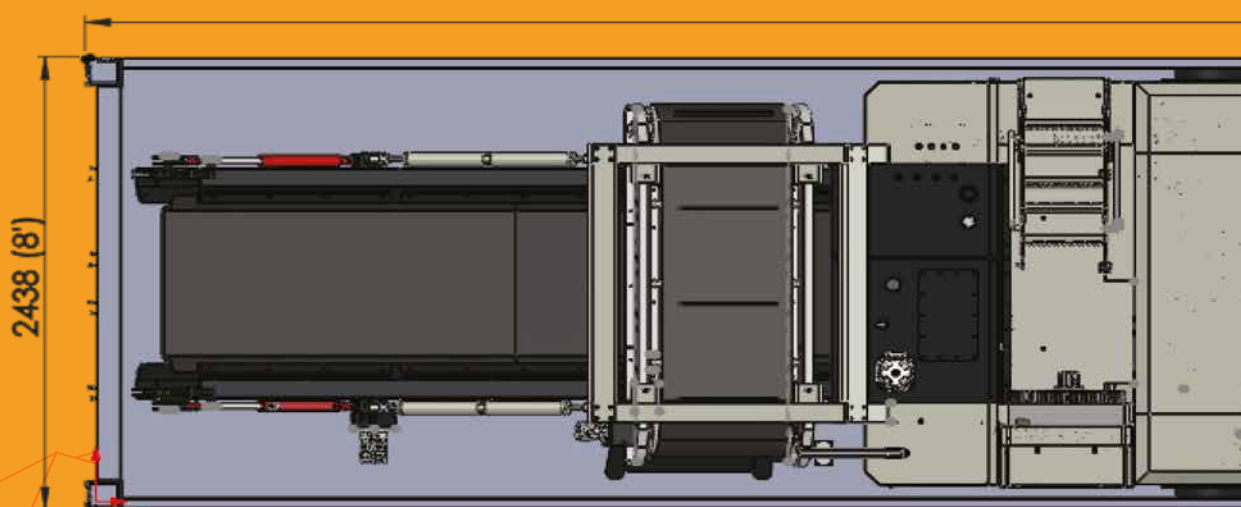
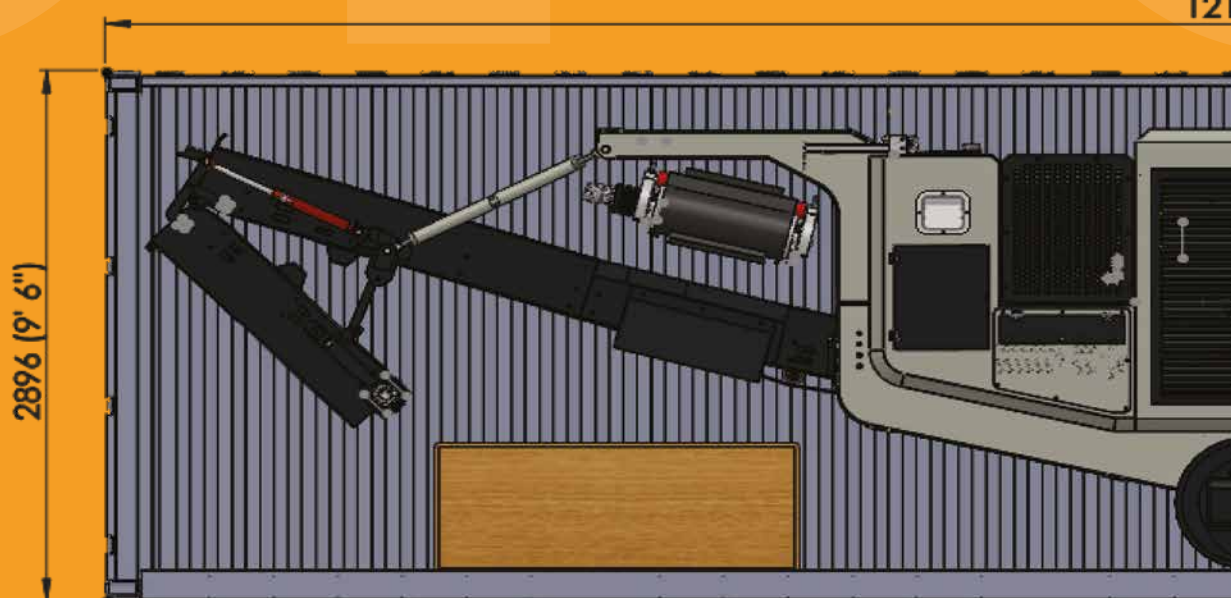
Transport Height Approx. (mm)	2500 (8" 2.43")
Transport Length Approx. (mm)	12000 (39' 4.44")
Transport Width Max. (mm)	2300 (7' 6.55")
Transport Weight of Max. Configuration (kg)	24000
Overseas Shipment Container	40' HC

**STANDART EQUIPMENTS**

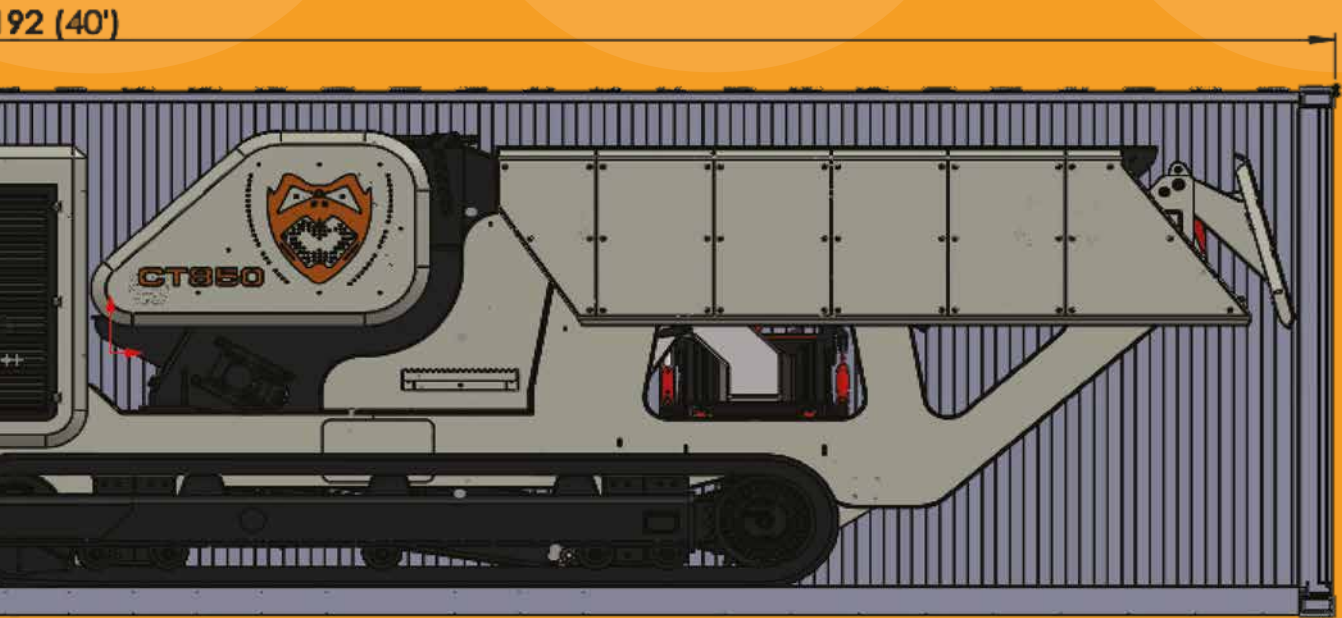
Moving Mechanism	Crawler Set
Remote Control	Wireless remote control including switchoff function for feeding unit
Control Panel	
Lubricating	Central System

# Transportation

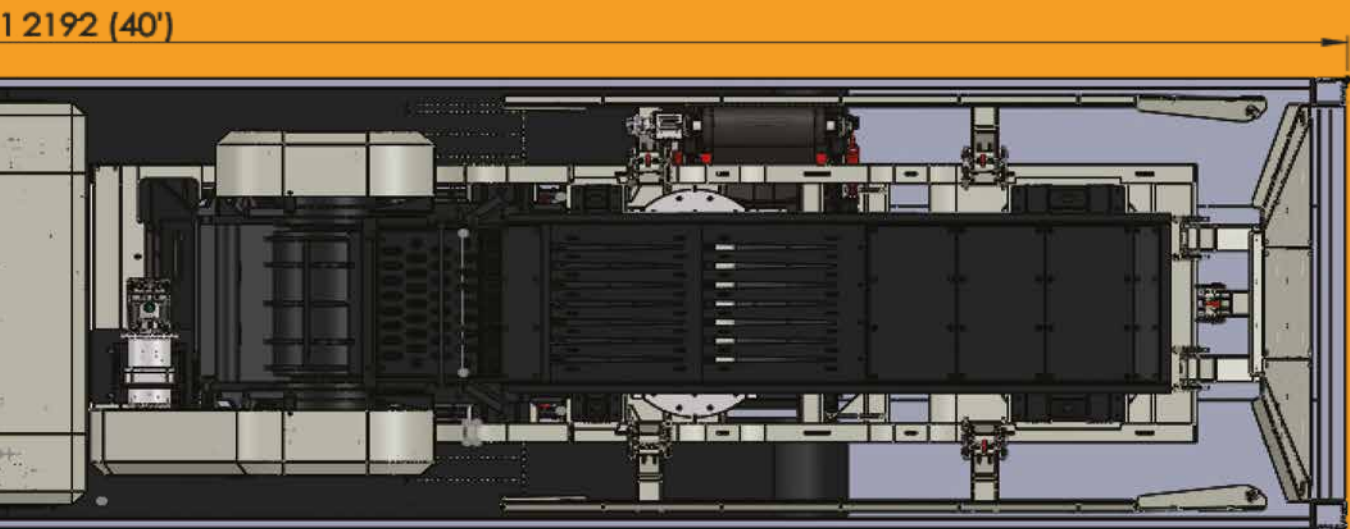
In our small World, containers carry goods overseas. **CT850** is designed to increase its mobility to be carried in a container.







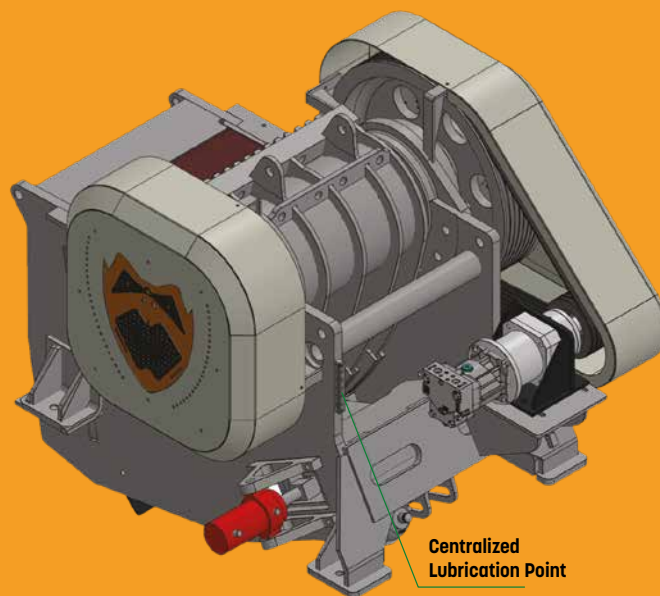
»14  
15«



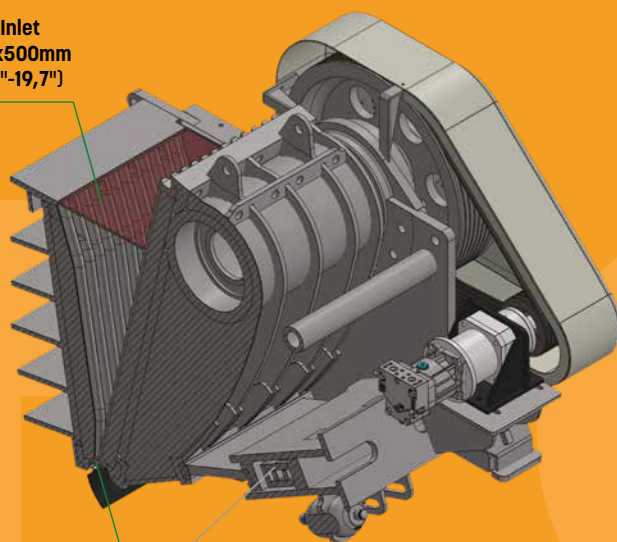
# Jaw Crusher

Jaw crushers are mainly the primary stage of material reduction in aggregate processing plants. As a compression type crusher, jaw crusher is comprised of a V-type two casting plates; one is a fixed jaw and the other is moving jaw. The material enters from the jaw inlet, Jaws crush the materials through the reciprocating movement of the movable jaw that compresses between itself and the fixed jaw with the help of eccentric shaft, and are crushing the material to the desired size. A fixed jaw is the breaking surface, while the movable jaw applies force on the material by compressing it against the stationary plate. The materials are chewed between the jaws until it is small enough to pass through the gap at the bottom of the crusher. The material discharges through the jaw outlet or gap. The adjustable jaw outlet gives the user freedom to choose the product size made by the crusher.

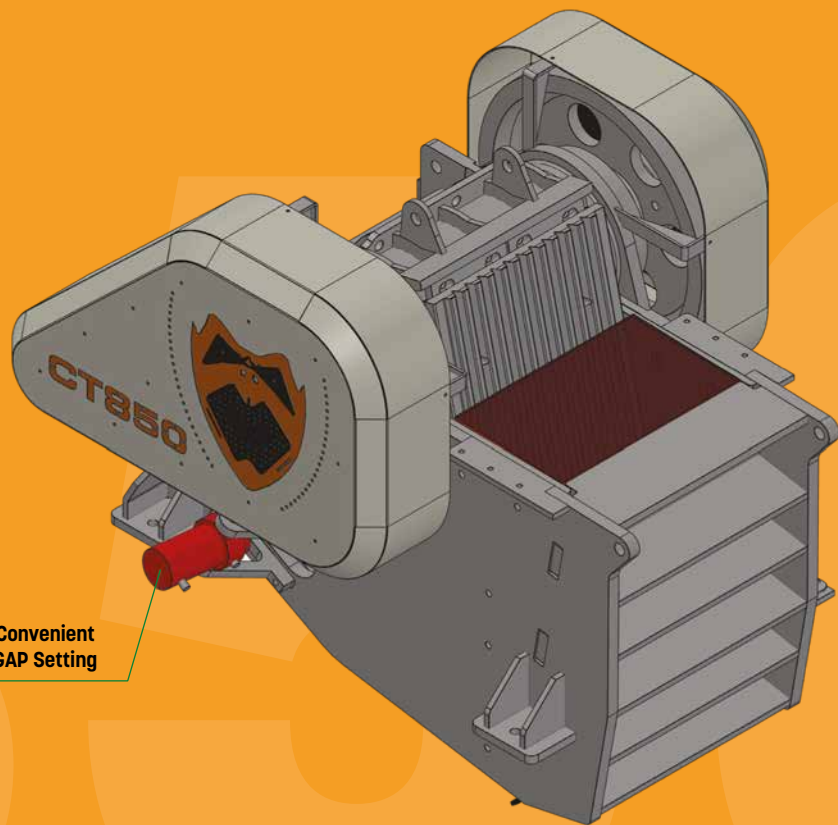
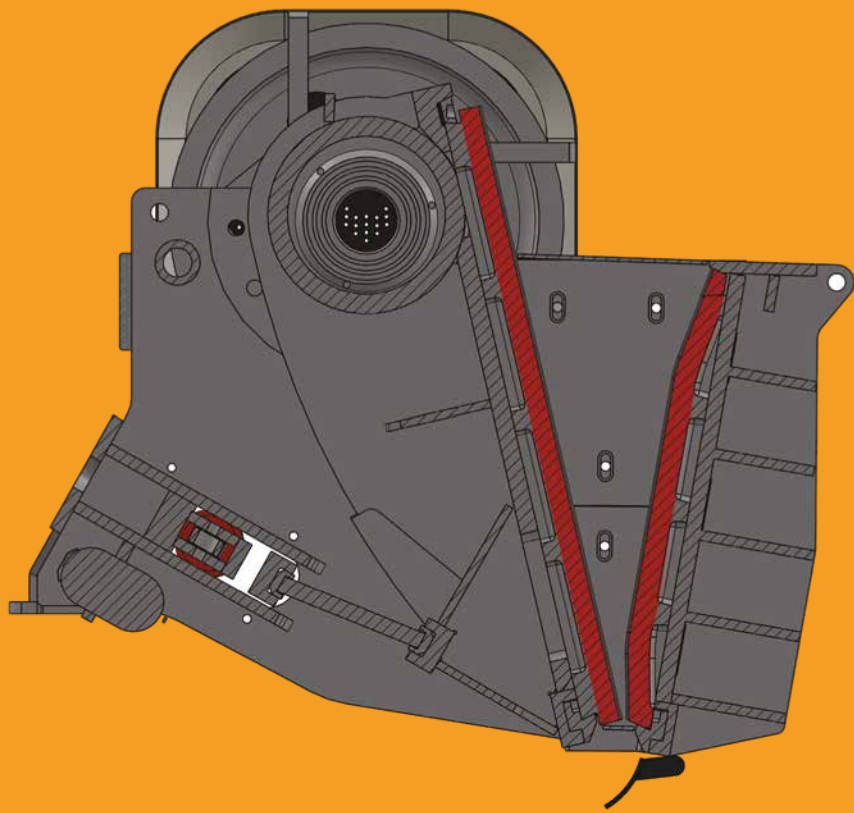
In CT580, the jaw outlet can be adjusted between 20 - 100 mm hydraulically. Jaw castings are made of high - quality hard manganese high carbon steel to sustain for a long life under high working levels.



**Jaw Inlet**  
800x500mm  
(31,5"-19,7")



**Crusher GAP Setting**  
25mm - 100mm (1"x3,9")



Convenient  
GAP Setting

» 16  
17 «

CT850





## **Diesel Engine: Perkins 1204J-E44TA**

Perkins Diesel Engine is offered to meet.



## ervice upport pare parts

You were a valuable customer until you bought the product; after purchasing, you are now a member of the Beyer / Evortle family.

Combining the experience of the past and today's technology, Beyer engineering takes care to choose the best brands in the world while choosing its suppliers and solution partners in the production process.

Evortle and Beyer Machinery produce machines that can last for many years with little maintenance.

Technical problems that may occur in the machines have been tried to be minimized. We are at your side as Beyer Machinery and our dealers for all kinds of problems and malfunctions.

We know the value of your time. An emergency response to a malfunction occurred in the machine saves both time and money.

We may send qualified Beyer service technicians from our Headquarters to all over the world.

But the main issue is to react any problems locally.

Evortle and Beyer Machinery use products that are eligible in the whole world and that you can easily access around you.

Our diesel engines are Cat, Hatz, Volvo, Perkins and Deutz brands.

Our bearings are SKF. Our hydraulic systems are from Dunfoss and Sun, our cooler is from AKG, our hydraulic filter is from Argo Hytos, and our accessories are from Stauff.

We choose ABB, Siemens and Schneider brands for switch materials in electrical panels.

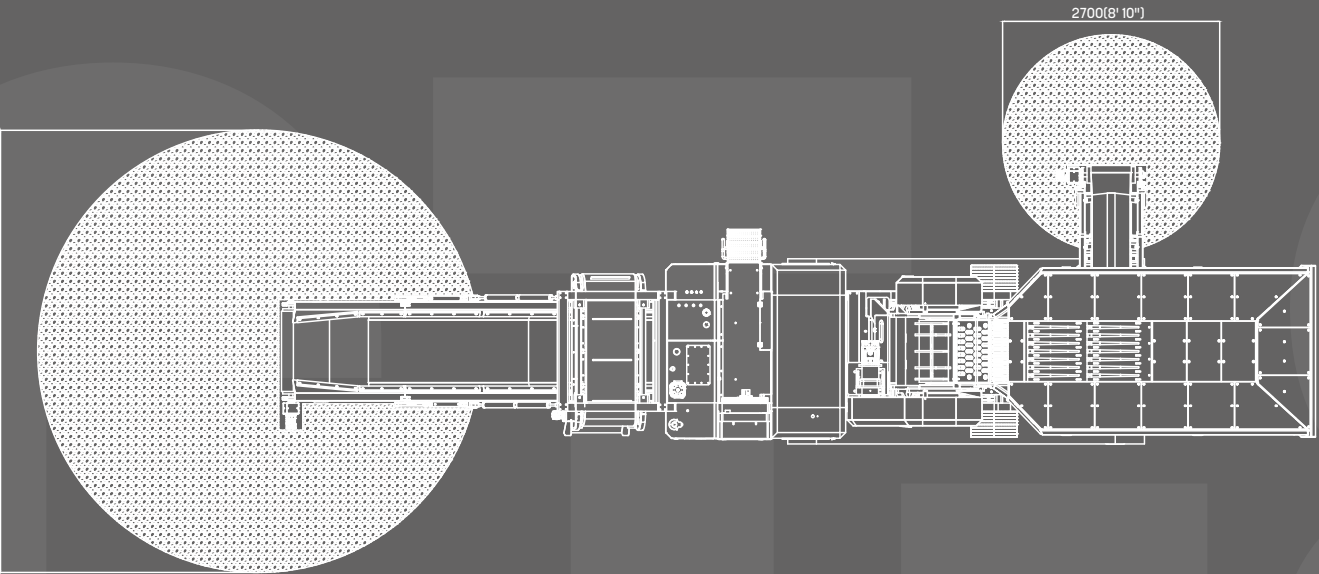
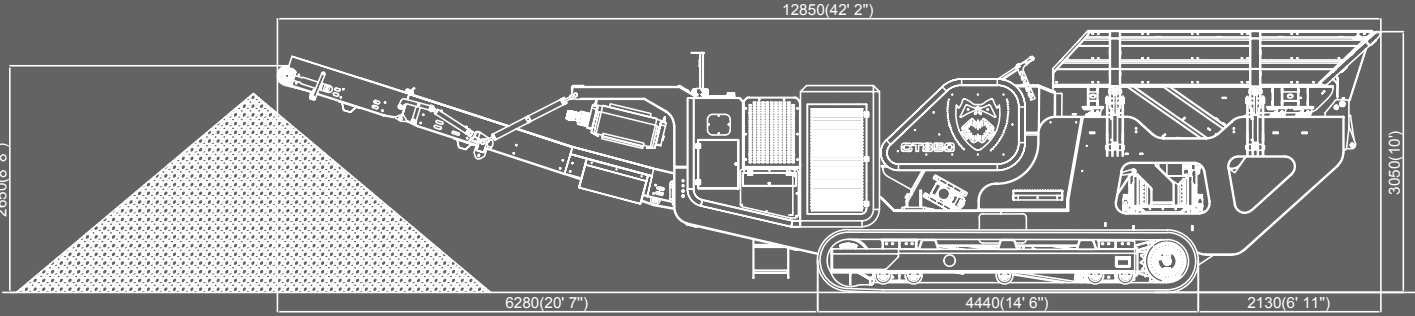
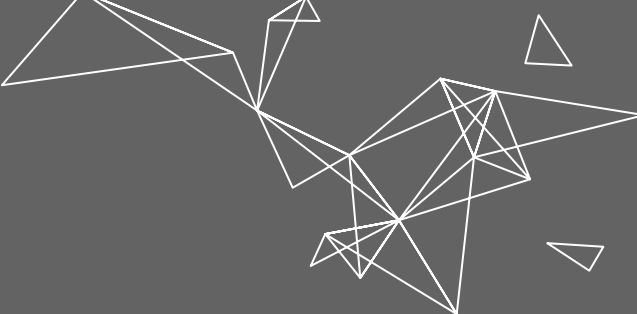
Our remote control systems are manufactured by HBC.

We use Strickland brand tracks as movement system.

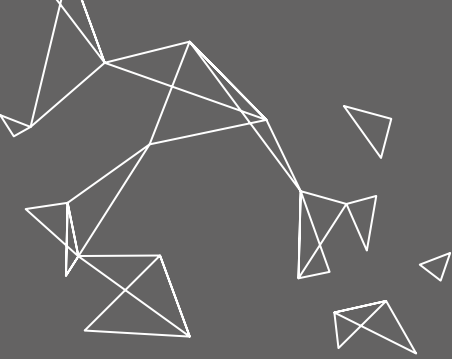
Engine fluids and filters are the kind you can find at your local suppliers.

Beyer saves you time and money by using easily available products with a widespread service network in its machines.

# Operational Dimensions

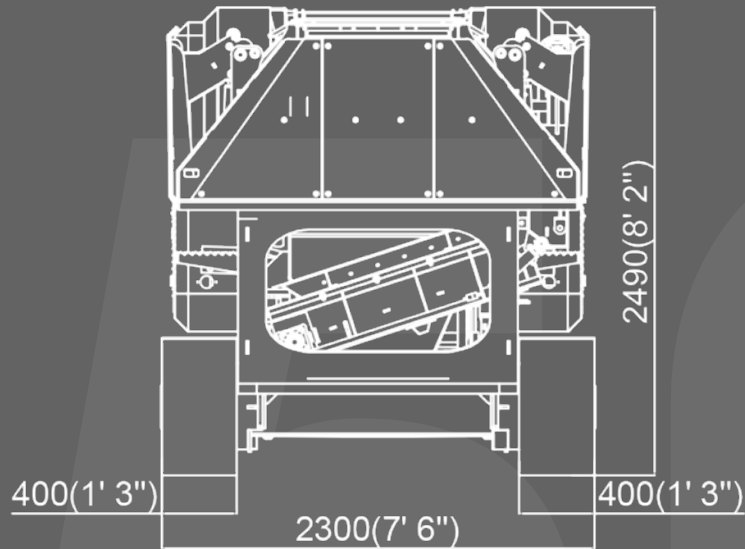
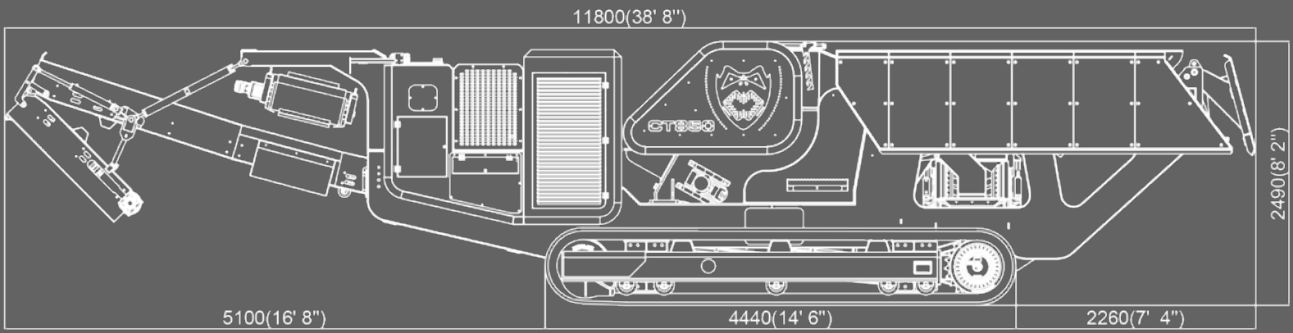






# Transportational Dimensions

CT850



»20  
21«



**EVORTLE**

**CT-850**

**CT-8**



# 850





Producer:

**BEYER MAKİNA SAN. VE TİC. LTD.**

General Distributor:

**EVORTLE MAKİNA İÇ VE DIŞ TİC. LTD.**

Saray Mah., Nazım Ercan Bulvarı, No: 36 06980

Kazan, ANKARA / TURKEY

+90 312 815 14 59-60

beyer@beyer.com.tr | [www.beyer.com.tr](http://www.beyer.com.tr)

info@evortle.com | [www.evortle.com](http://www.evortle.com)